



**2016 Parts Catalog**





To Order Call: 1 414 247-7100

## **Spare Parts list 616/624**

### *Qty. Part Description Part Number*

37 Complete Set Filter bags (40") 5005-00 \*

5 Filter Cages (40") 5010-A0

1 Magnehelic gauge 5040-00

1 Micro Filter Cartridge 5300-00

1 Vacuum gauge 6063-00

1 In-Line filter 5041-00

2 Sets Blower drive belts \*

1 Removable Wear Plate 5087-BC

2 Diaphragm Valve, baghouse 5031-01

2 Solenoid Valve, baghouse 5025-00

2 Engine Fuel filter \*

2 Engine air cleaner elements-primary \*

2 Engine air cleaner elements-secondary \*

2 Engine Oil filter \*

1 Idler bushing 6720-I1 \*

1 Hydraulic oil filter 3011-00

1 Pair, butterfly springs 9136-00

1 Baghouse Timer Board 2033-00D

1 Dump Timer, Repeat Cycle 2314-50

**Spare Parts list 721***Qty. Part Description Part Number*

37 Complete Set Filter bags (40") 5005-00 \*

5 Filter Cages (40") 5010-A0

1 Magnehelic gauge 5040-00

1 Micro Filter Cartridge 5300-00

1 Vacuum gauge 6063-00

1 In-Line filter 5041-00

1 Omega Coupling 6174-00

1 Removable Wear Plate 5087-BC

2 Diaphragm Valve, baghouse 5031-01

2 Solenoid Valve, baghouse 5025-00

2 Engine Fuel filter \*

2 Engine air cleaner elements-primary \*

2 Engine air cleaner elements-secondary \*

2 Engine Oil filter \*

1 Hydraulic oil filter 3011-00

1 Pair, butterfly springs 9136-00

1 Baghouse Timer Board 2033-00D

1 Dump Timer, Repeat Cycle 2314-50

1 Dryer desiccant kit 4159-01 \*



To Order Call: 1 414 247-7100

## **Spare Parts list for the 6100**

### *Qty Part Description Part Number*

37 Complete Set Filter bags (40") 5005-00 \*

5 Filter Cages 5010-A0

1 Magnehelic gauge 5040-00

1 Micro Filter Cartridge RC122P \*

1 Vacuum gauge 6063-00

1 In-Line filter 5041-00

1 Removable Wear Plate 5087-BC

2 Diaphragm Valve, baghouse 5031-01

2 Solenoid Valve, baghouse 5025-00

2 Engine Fuel filter \*

2 Engine air cleaner elements-primary \*

2 Engine air cleaner elements-secondary \*

2 Engine Oil filter \*

1 Hydraulic oil filter 3011-00

1 Pair, butterfly springs 9136-00

1 Baghouse Timer Board 2033-00D

1 Dump Timer, Repeat Cycle

1 Dryer desiccant kit 4159-01 \*



2031 CC Pulse system wiring



2033 00D Baghouse pulse system circuit board



2052 01 Round 6 Plug

2052 02 RV 7 Plug



2066 00 Coiled cable 6 wire

2066 07 Coiled cable 7 wire



2086 00 10 Amp circuit breaker



To Order Call: 1 414 247-7100



2108 00  
Momentary Button



2208 03  
Start button  
(Electric units)



2212 00  
E Stop Button



2213 00  
2 position switch



2314 50  
Vacuum/Dump timer box



2215 00  
Slide gate switch



To Order Call: 1 414 247-7100



2276 00 Bag house light bar  
2276 LED Bag house light bar



2291 00 Relay  
2294 00 relay



2310 00  
Timer 100K Asbestos



2310 AA  
Potentiometer Assembly



2377 AA Warning Light



2379 AB1  
Interconnector cable

Call to order: 1 414 247-7100



2379 AB Emergency Remote Shutdown Box



2643 00  
Static Discharge Cable Reel



3011 00  
Hydraulic filter



3010 01 Hydraulic gauge



3010 00 Hydraulic housing



Call to order: 1 414 247-7100



3026 AO Hydraulic pump



4005 00 Unloader valve



4039 00 Air cylinder 10'' stroke

4040 00 Butterfly Cylinder

4044 AA Air cylinder throttle



4061 00 Air valve



4065 00 Butterfly solenoid

Call to order: 1 414 247-7100



4065 01  
Din Connector for the 4065-00



4065 02  
Solenoid Valve Throttle



4065 03  
1/2 Conduit for 4065-02



4066 00 Air switch



4068 00  
Air line from tower to bag house

Call to order: 1 414 247-7100



4086 AO Bag house vibrator



4097 00  
4 way 12VDC 2 position air valve



4097 02 Coil conduit 120 volt  
4097 04 Coil conduit 12 volt



4098 00 Air regulator 1/8 port

4142 AO Regulator 1" port

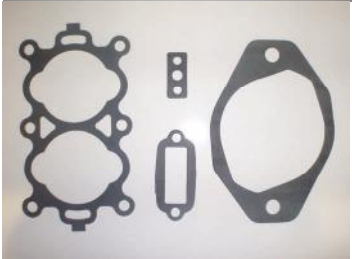


4101 00 Air pressure gauge

Call to order: 1 414 247-7100



4110 AO  
Compressor rebuilt  
4110 AO1  
Compressor New  
(early models)



4110 50  
Compressor gasket kit



4110 AO3  
Compressor front gasket



4111 AO  
Air governor



4112 AO  
Midland air dryer

Call to order: 1 414 247-7100



4112 01  
Air dryer repair kit (Midland)



4112 02  
Air dryer purge kit



4112 03  
Air dryer heater element  
(Midland)



4112 04  
Safety valve (Midland dryer)



4130 00  
Air valve (3 position manual)

Call to order: 1 414 247-7100



4131 00  
Pneumatic actuator



4159 00  
Air dryer (Haldex)



4159 01  
Air dryer Desiccant Kit (Haldex)

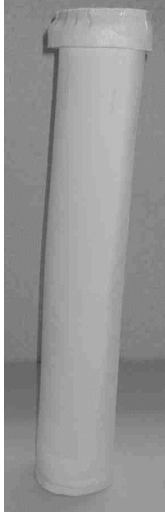


4159 06  
Safety Relief valve (170 PSI)



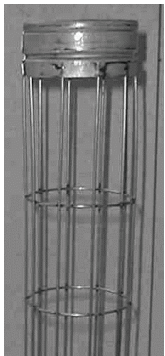
4163 00  
Alcohol Deicer Dispenser

Call to order: 1 414 247-7100



#### Filter Bags w/Cuffs

- 5002 00 4.5" x 40" Nomex
- 5004 AO 4.5" x 28" Filter (coated)
- 5004 AO1 4.5" x 28" w/ground wire coated
- 5005 00 4.5" x 40" filter coated
- 5005 01 4.5" x 40" w/ground wire coated
- 5005 12 4.5" x 60" filter



- 5008 AO 4.5" x 28" Stainless steel
- 5009 AO 4.5" x 28" Zinc plated
- 5009 CP 4.5" x 28" Galvanized
- 5009 SS 4.5" x 28" Stainless
- 5010 AO 4.5" x 40" Zinc plated
- 5010 CP 4.5" x 40" Galvanized snap ring neck
- 5011 00 4.5" x 40" Stainless steel
- 5013 00 4.5" x 60" Zinc plated



#### Filter Bags w/Snap Neck Ring

- 5004 CP 4.5" x 28" Filter coated (S.R.N)
- 5006 00 4.5" x 40" Filter coated (S.R.N)
- 5006 01 4.5 X 40" Filter coated (S.R.N) Grd.
- 5006 02 4.5" x 40" Filter (Raton) (S.R.N)
- 5006 38 4.5" x 38" Filter coated 38" (S.R.N)

Call to order: 1 414 247-7100



5025 00  
Solenoid Baghouse



5031 01 Pre-06/2016  
4 bolt diaphragm kit



5031 02 Diaphragm Valve 3/4"



5031 03  
06/2016 diaphragm repair kit



5058 CC1  
Complete Standard Dump  
Door Assembly



Call to order: 1 414 247-7100



5033 00  
Differential Pressure (0-10)  
5040 00  
Differential Pressure (0-50)



5041 00  
Filter in-line 40 micron for Mag  
gauges



5049 AA  
Gasket, dump door



5067 BE Air horn Poly



5081 BC Removable wear plate  
9.5" Liner  
5087 BC Removable wear plate  
11" Liner  
5516 BC Removable wear plate  
for 44" bag house  
5516 BC1 44" bag house  
9.5 " liner

Call to order: 1 414 247-7100



5098 BC  
Air Manifold 4" pipe



5150 00  
Hepa filter



9653 00  
Hepa filter for the vent assy.



9653 01  
Hepa cartridge

Call to order: 1 414 247-7100



5152 A0  
Filter 22" bottom load

5153 00 Filter 26"

5300 00 Filter 36"



5159 00 Hepa filter 12.75"x 22"

5159 50 Hepa filter 17.75"x 24"



5154 AE  
Gasket Micro filter



5164 BC  
Inlet pipe removable 6"

5172 BC  
Inlet pipe removable 5"

Call to order: 1 414 247-7100



5066 BE 11" wear plate  
5079 BE 9.5" wear plate  
9215 00 plow bolts  
9215 01 sealed washers 3/8"



5175 AE  
Upper Auger wiper retainer  
5176 AE  
Wiper auger paddle



5177 AE  
Wiper retainer bar

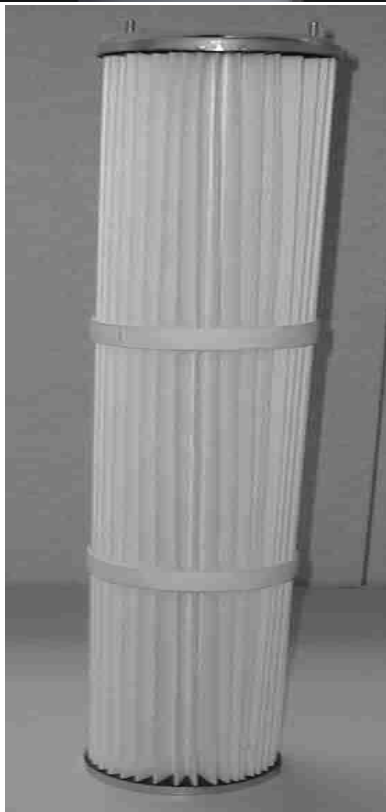


3016 00 Auger motor 44" & 54"  
3060 00 hyd. hose 3/8 x 27 1/2"  
5185 BE Flange For Upper Auger Shaft  
5186 AO Hydraulic Motor Adapter  
A5188 CC Upper Auger 44" Asbestos  
5188 CC Upper Auger 54" Asbestos  
5191 CC Lower Auger 44" & 54"  
9321 00 Sleeve Bearing 44" & 54"

Call to order: 1 414 247-7100



5178 CC  
Cone 54" 17" OD flange  
5178 cc-ss  
Cone 54" Stainless Steel



5204 00  
Filter Cartridge w/inner wire

Call to order: 1 414 247-7100



5313 AC  
Pinion gear Hepa Slide gate



5320 AE  
Gasket slide gate to cone



5321 00  
Seal w/O-Ring Slide gate



5322 00  
O-ring Slide gate



5333 AE  
Valve plate roller Slide gate

Call to order: 1 414 247-7100



5342 BE Roller Shaft Slide gate



5380 00 Flat washer 5/16"  
brass



5381 00 Cotter pin 1/16" X 3/4"



5404 01 16" Manway gasket  
5405 01 20" Manway gasket



5404 A2 16" Retaining Ring  
5405 03 20" Retaining Ring



5405 02 Cam assy. 16" & 20"

Call to order: 1 414 247-7100



5506 DC 54" Removable  
flange Wear section

5506 DC2 54" Removable  
flange Wear section (2016)



6005 00 Ignition switch



6005 01 Key Set John Deere



6010 00 Throttle cable 72"

6011 AE Throttle cable 36"

6011 AE1 Throttle cable 48"

6320 00 Throttle cable 30"

6660 01 Thr cable (PE6068T)



6004 00 Tach (up SN 141)

6017 00 Tach

6043 00 Tach w/hour meter

6043 02 Tach w/o hr. meter

6097 00 Tach

6653 06 Tach w/hr meter



Call to order: 1 414 247-7100



6055 00 Amp meter 0-60



6055 01 Volt meter 616HP



6057 00 Temp gauge w/8" TB

6057 01 Temp gauge 616 HP

6058 05 Temp gauge



6057 02 Temp sender 616HP

6058 06 Temp sender



6058 00 Oil pressure gauge

6058 01 Oil psi gauge 616HP

6058 03 Oil pressure gauge

6059 00 Oil psi Murphy

Call to order: 1 414 247-7100



6058 02 Oil sender Tier 1



6060 00  
Safety Switch Murphy



6061 00 Hour meter



6063 00 Vacuum gauge  
Glycerin filled



6052 00 Tach cable 36"  
6064 00 Tach cable 40"  
6065 00 Tach cable 72"  
6066 00 Tach cable 21-5/16"

Call to order: 1 414 247-7100



6113 02 616DVJ 3/4 plug vent  
6113 21 616 DVJ 1/2" plug vent  
6248 02 721 Breather cap (21)



6113 37 Sight glass 3/4" NPT  
6121 00 Sight glass 418 1/2 NPT



6174 00 Omega Element E-60  
6180 00 Omega Element E4  
6180 05 Omega Element E5  
6186 AO Omega element E20  
6193 AO Omega element E30  
6510 00 Omega element E70



6208 01 Fuel gauge Electric



6208 03 Fuel gauge sender

Call to order: 1 414 247-7100



6467 03 Pop up w/stem



6467 04 Pop up gasket



6467 08 Electronic control valve



6633 03 Falk Element  
6633 01 Falk Assembly



6653 02T7 Compressor  
6068HF275 225 Hp. T2

Call to order: 1 414 247-7100



6660 02T10 Diesel Eng.  
Power view



6660 02T11 Diesel Eng.  
Power view rocker



6660 02T16  
Key John Deere engine enclosure



6660 02T18 Rocker switch  
Rabbit5/Turtle  
6660 02T18M Rocker switch  
Rabbit/Turtle Momentary



6679 03T05 Electronic throttle  
control



6695 03T12 Fan Control  
Engine cooling 6.8L Teir3

Call to order: 1 414 247-7100



6720 I1 Bushing IDQ1 x 1"  
Browning

6723 S6 Bushing SFBB x 3/4"  
Idler

6723 S7 Bushing SKBB Idler

6723 S9 Bushing SF-BB 1"



6725 03T14 Vac valve air cleaner cover



6727 03T1 Lock cyl. w/Keys  
Eng. Instrument panel cover



6727 03T11 Lock cam  
Engine instrument panel cover



7022 00 Hose clamp 4" DB

7023 00 Hose clamp 5" DB

7024 00 Hose clamp 6" DB

7025 00 Hose clamp 8" DB

Call to order: 1 414 247-7100



7025 AE Sleeve 2.5" ST. 6" Long  
7026 AE Sleeve 4" ST. 8" Long  
7027 AE Sleeve 5" ST. 8" Long  
7028 AE Sleeve 6" ST. 9" Long



7025 BC Sleeve 2.5" w/handle  
8" Long  
7026 BC Sleeve 4" w/handle  
8" Long  
7027 BC Sleeve 5" w/handle  
8" Long  
7028 BC Sleeve 6" w/handles  
9" Long



7040 DC Roof nozzle 4"  
7050 DD Roof nozzle 5"



7042 BC Bulk nozzle 4"  
7052 BC Bulk nozzle 5"  
7062 BC Bulk nozzle 6"

Call to order: 1 414 247-7100



Inlet reducers

- 7202 AC 5" OD to 4" ID
- 7202 AC1 6" OD to 5" ID
- 7202 BC1 6" OD to 5" ID
- 7202 AC2 8" OD to 6" ID

- 7207 CE 5"x2.5" male
- 7209 AC 6"x 4" QD
- 7206 AC1 6"x (4) 2" splitter



Male WYE

- 7211 AC 5x3x3 OD
- 7212 AC 4x2x2 OD
- 7212 AC1 4x4x4 OD
- 7220 BC1 WYE 8x4x4 OD

Lateral

- 7226 AC 6"x2.5"  
pipe



Wear Elbow Blasting style

- 7235 BC 4" Wear elbow
- 7236 BC 5" wear elbow
- 7237 BC 6" wear elbow
- 7237 BCR 6" wear elbow Reinforced



Call to order: 1 414 247-7100



Roofing style wear elbow

7236 BC3 5"

7237 BC3 6"



7440 AA 4" coupling

7450 AA 5" coupling

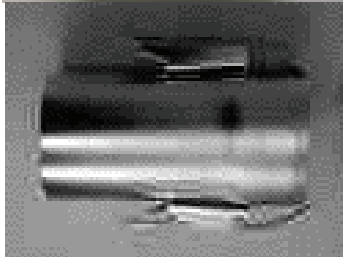
7460 AA 6" coupling



7442 AC 4" male w/O-ring

7452 AC 5" male w/O-ring

7462 AC 6" male w/O-ring



7441 BC 4" female 2 clamp

7451BC 5" female 2 clamp

7467 BC 6" female 2 clamp

7461 BC 6" female 3 clamp



7468 00 4" compression clamp

7469 00 5" compression clamp

Call to order: 1 414 247-7100



7540 00 Ring Lock coupler 4"  
7550 00 Ring Lock coupler 5"  
7560 00 Ring Lock coupler 6"  
7580 00 Ring Lock coupler 8"



8255 00 3-way diverter ball  
valve 1/2"



8298 00 Fog jet nozzle brass



8299 00 Nozzle Vee jet brass  
8300 00 Full jet nozzle brass  
8302 00 Flood jet nozzle  
1/4K- 7.5 brass



9023 00 Spring vacuum relief  
valve

Call to order: 1 414 247-7100



8307 00 Poly T strainer 3/4"  
8307 01 Strainer screen Blue  
9307 01w Strainer screen W  
8307 02 Bowl/ w gasket  
8307 03 Gasket



8308 200 Poly Y strainer 2"



9019 00 Hand jack #5,000  
9019 AE Hand jack mount tube



9028 00 6" Butterfly valve disc  
9029 02 4" Butterfly valve disc  
9117 AO1 5" Butterfly valve disc  
9135 01 12" Butterfly valve disc  
9137 00 8" Butterfly valve disc

Call to order: 1 414 247-7100



9043 00 Draw bar 3" eye  
9043 30 Draw bar 2.5 " eye



9045 00 Rubber wheel chocks



9047 00 Hydraulic tank cap 2"



9048 00 Fuel cap 2" locking  
9491 00 Fuel cap 3" locking  
9491 01 Key set, 3" locking cap



9058 00 Lynch pin

Call to order: 1 414 247-7100



9062 00 Clevis pin 1/2" x 4"  
9063 00 Clevis pin 1" x 3-1/2"



9066 00 Clevis sling hook 3/8"



9080 00 Jack stand pin asm.



9374 01 Sight glass replacement  
9374 02 5" Hand wheel  
9374 03 Gasket  
9374 04 Disc plate

Call to order: 1 414 247-7100



9087 50 Latch spring clip  
(Lid lift)



9088 00 Latch spring clip



9097 20 Toggle Clamp



9113 50 Latch Assembly  
Engine Shroud

Call to order: 1 414 247-7100



9113 00 Folding t" latch  
9113 01 key for latch



9113 60 Lock Assembly  
Engine Enclosure



9103 01 Fuel gauge twin  
site sender



9117 AO Butterfly 5"  
9029 00 Butterfly 6"  
9134 00 Butterfly 8"  
9135 00 Butterfly 12"

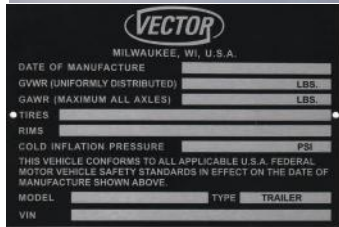
Call to order: 1 414 247-7100



9135 02 Replacement shaft  
12" butterfly



9136 00 Butterfly Spring Set



9173 00 Name plate



9205 00 5/16"x1/2" SS Shoulder Bolt



9206 00 Jam nut 3/4"-10 SS



Call to order: 1 414 247-7100



9215 00 plow bolt 3/8"-16x1"



9215 01 Sealed washer 3/8"x3/4"

9215 02 Sealed washer 1/4"x1/2"



9215 AC Tower pin w/grease fit

9215 AE Tower pin



9300 00 Breakaway control kit

9300 LED Battery box

9300 LED-1 Battery

9300 03 Breakaway switch

9300 04 Breakaway cable



9289 00 License plate

Call to order: 1 414 247-7100



9303 01 6K Grease cap



9307 00 Junction block 7 pole



9391 00 Grease cap 7K Hub



9517 AA Bag house time box  
(Old style board)



9517 00 Bag house timer box

Call to order: 1 414 247-7100



9518 AA Wet Head Pick-up Assembly



9533 00 Tool box  
9533 01 Lock & key set  
9533 AA tool box (new style)



9557 AA Wet head power module



9840 DC  
Dual orifice gate assy.



9589 60 10" butterfly  
9590 00 6" butterfly assy.  
Air To Close Spring To Open  
9590 50 6" butterfly assy.  
Air to Open Spring To Close

Call to order: 1 414 247-7100



9590 AA drum filler 4"



9595 AA drum filler standard  
9024 00 3 ring 55 gallon  
drum



9596 AA Hopper assy. 1 cu yd  
9597 AA Hopper assy 2 cu yd  
Self dumping

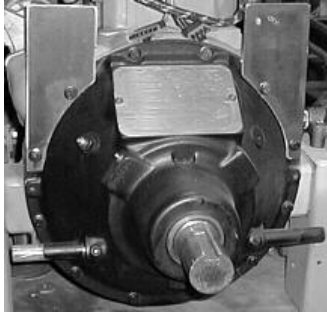


9638 AA Slide gate



9912 AA Slide gate repair kit

Call to order: 1 414 247-7100



### Clutches

6997 00 \* (616/624)

6997 50 \* (721)

6998 50 \* (6100)

6994 01 Twin disc 11.5" service kit.



### Intermediate Separators

self dumping hoppers

9596 AA 1 cubic yard

9597 AA 2 cubic yard



B9701 AA 54"

Separator w/stand

B9701 AA1 54"

Separator skid



9749 AA Roof

hopper/Rock separator

w/ tow package



Vacuum Hoses

**Heavy duty AR 180**

- K7005-100 2"
- K7003-100 2.5"
- K7004-100 3"
- K7005-50 4"
- K7006-50 5"
- K7007-50 6"
- K7009-50 8"

**Clear Heavy Duty**

- 7342-00 2"
- 7343-00 3"
- 7344-00 4"
- 7345-00 5"

**Urethane lined**

- 7307-00 4"
- 7308-00 5"
- 7309-00 6"
- 7309-80 8"

**Vacuum Hose**

**Assy**

- 7614-AB 4" whip
- 7615-AB 5" whip

- 7340 U1 4" blk hose
- 7340 U2 4" blu hose
- 7350 U1 5" blk hose
- 7350 u2 5" blu hose
- 7360 U1 6" blk hose
- 7360 U2 6" blu hose

**Hopper hose**

- 7360-00 6" x 16'
- 7363-00 8" x 16' High temp.

Call to order: 1 414 247-7100

**Blank**

## Table of Contents

<b>Spare parts list</b>	
<b>616/624</b>	<b>Page 2</b>
<b>721</b>	<b>Page 3</b>
<b>6100</b>	<b>Page 4</b>
<b>Electrical</b>	<b>Page 5-8</b>
<b>Hydraulics components</b>	<b>Page 8-9</b>
<b>Pneumatic components</b>	<b>Page 9-14</b>
<b>Bag house filters</b>	<b>Page 15</b>
<b>Dump chute &amp; door</b>	<b>Page 16</b>
<b>Air system components</b>	<b>Page 16-17</b>
<b>Bag house air manifold</b>	<b>Page 18</b>
<b>Hepa filters</b>	<b>Page 18</b>
<b>Micro filters</b>	<b>Page 19</b>
<b>Bag house inlet tube</b>	<b>Page 19</b>
<b>Auger assy.</b>	<b>Page 20</b>
<b>Cone</b>	<b>Page 21</b>
<b>Diaphragm and kit</b>	<b>Page 21</b>
<b>Filter Cartridge</b>	<b>Page 21</b>



<b>Wear plates</b>	<b>Page 21</b>
<b>Hepa slide gate components</b>	<b>Page 22-23</b>
<b>Manhole components</b>	<b>Page 23</b>
<b>Wear section</b>	<b>Page 24</b>
<b>Keys &amp; ignition</b>	<b>Page 24</b>
<b>Throttle cable &amp; Tach</b>	<b>Page 25-26</b>
<b>Amp, volt &amp; oil gauges</b>	<b>Page 25-26</b>
<b>Temp &amp; oil Senders</b>	<b>Page 26</b>
<b>Hr meter</b>	<b>Page 26</b>
<b>Tach cable</b>	<b>Page 27</b>
<b>Blower vent &amp; sight gauge</b>	<b>Page 27</b>
<b>Omega coupling</b>	<b>Page 27</b>
<b>Elect. fuel gauge &amp; sender</b>	<b>Page 28</b>
<b>Posi Seal &amp; gasket</b>	<b>Page 28</b>
<b>Electronic control valve</b>	<b>Page 28</b>
<b>Faulk coupler</b>	<b>Page 28</b>
<b>Air compressor</b>	<b>Page 28</b>
<b>Power view &amp; switch</b>	<b>Page 29</b>

<b>Power view rocker (+/-)</b>	<b>Page 29</b>
<b>Power view rocker (turtle)</b>	<b>Page 29</b>
<b>JD Eng. Enclosure Key</b>	<b>Page 29</b>
<b>Electronic throttle control</b>	<b>Page 29</b>
<b>Fan controller 6.8L tier 3</b>	<b>Page 29</b>
<b>Idler bushing</b>	<b>Page 30</b>
<b>Air cleaner</b>	<b>Page 30</b>
<b>Eng. Instrument panel lock</b>	<b>Page 30</b>
<b>Hose clamps 2 bolt style</b>	<b>Page 30</b>
<b>Hose sleeves</b>	<b>Page 31</b>
<b>Hose sleeves with handle</b>	<b>Page 31</b>
<b>Roof nozzle</b>	<b>Page 31</b>
<b>Bulk nozzle</b>	<b>Page 31</b>
<b>Inlet reducers</b>	<b>Page 32</b>
<b>Reducers</b>	<b>Page 32</b>
<b>Wyes</b>	<b>Page 32</b>
<b>Lateral</b>	<b>Page 32</b>
<b>Wear elbow</b>	<b>Page 33 –33</b>
<b>Hose coupling M/F</b>	<b>Page 33</b>

<b>Hose coupling Male</b>	<b>Page 33</b>
<b>Hose coupling Female</b>	<b>Page 33</b>
<b>Compression clamps</b>	<b>Page 33</b>
<b>Ring lock coupler M/F</b>	<b>Page 34</b>
<b>3- way diverter ball valve</b>	<b>Page 34</b>
<b>Fog jet nozzle brass</b>	<b>Page 34</b>
<b>Nozzles</b>	<b>Page 34</b>
<b>Vacuum relief spring</b>	<b>Page34</b>
<b>Strainer T</b>	<b>Page 35</b>
<b>Hand jack</b>	<b>Page 35</b>
<b>Butterfly disc</b>	<b>Page 35</b>
<b>Drawbar ring</b>	<b>Page 36</b>
<b>Chock</b>	<b>Page 36</b>
<b>Fuel &amp; hydraulic caps</b>	<b>Page 36</b>
<b>Lynch pin</b>	<b>Page 36</b>
<b>Sling hook</b>	<b>Page 37</b>
<b>Jack stand pin</b>	<b>Page 37</b>
<b>Clevis pin</b>	<b>Page 37</b>

<b>Sight glass</b>	<b>Page 37</b>
<b>Latch spring clip (lid)</b>	<b>Page 38</b>
<b>Latch spring clip (cone)</b>	<b>Page 38</b>
<b>Toggle clamp</b>	<b>Page 38</b>
<b>Latch engine shroud</b>	<b>Page 38</b>
<b>Latch folding T</b>	<b>Page 39</b>
<b>Latch engine enclosure</b>	<b>Page 39</b>
<b>Fuel gauge</b>	<b>Page 39</b>
<b>Butterfly valve</b>	<b>Page 39</b>
<b>Butterfly shaft</b>	<b>Page 40</b>
<b>Butterfly springs</b>	<b>Page 40</b>
<b>Name plate</b>	<b>Page 40</b>
<b>Shoulder bolt</b>	<b>Page 40</b>
<b>Tower bolt</b>	<b>Page 41</b>
<b>License plate</b>	<b>Page 41</b>
<b>Plow bolt</b>	<b>Page 41</b>
<b>Sealed washer</b>	<b>Page 41</b>
<b>Tower Bolt with grease fitting</b>	<b>Page 41</b>
<b>Breakaway system</b>	<b>Page 41</b>

<b>Junction Box</b>	<b>Page 42</b>
<b>Grease cap</b>	<b>Page 42</b>
<b>Baghouse timers</b>	<b>Page 42</b>
<b>Wet head pick-up</b>	<b>Page 43</b>
<b>Tool box</b>	<b>Page 43</b>
<b>Wet head power module</b>	<b>Page 43</b>
<b>Double dump</b>	<b>Page 43</b>
<b>Auger part break down</b>	<b>Page 43</b>
<b>Butterfly valves</b>	<b>Page 45</b>
<b>Drum filler/ top hat</b>	<b>Page 44</b>
<b>Drum filler with stand</b>	<b>Page 44</b>
<b>Hopper containers</b>	<b>Page 44</b>
<b>Hepa slide gate</b>	<b>Page 44</b>
<b>Slide gate repair kit</b>	<b>Page 44</b>
<b>Clutches</b>	<b>Page 45</b>
<b>Separators</b>	<b>Page 45</b>
<b>Hoses</b>	<b>Page 46</b>